	MARIANO MARCOS STATE UNIVERSITY		Document Code	PD-FRM-002
	Procurement Division		Revision No.	5
	Request for Quotation (RFQ) (Goods and Services)		Effectivity Date	April 20, 2022

REQUEST FOR QUOTATION (RFQ)

Date: July 06, 2022
PR No. 2022-07-222 (05206441) CAS

Sir/Madam:

Please quote your lowest price on the item/s listed below, and submit your quotation duly signed by you or your duly authorized representative not later than **3 days** subject to the Terms and Conditions provided at the last page of this RFQ.

Delivery period must be at least within **30 days** upon receipt of the Notice to Proceed or Purchase Order.

For any clarification, you may email us at bac@mmsu.edu.ph.


NATHANIEL R. ALIBUYOG
BAC Chair

ITEM	QTY	Unit	ITEM DESCRIPTION	ABC/unit	UNIT PRICE
	3	unit	AIR CONDITIONING UNIT, Wall Mounted Split Type, Inverter Type, R32; V/hz/ph: 200-230/60/1; Power Consumption, Watts= 2600; Rated Cooling Load, Btu/h= 23,800; Calculated Load, Btu/h= 21,500 70% Energy Saving, Fast Cooling, Low Noise, Auto Clean, Active Energy Control With Installation Supplier shall provide additional wire from outdoor unit to PCB	70,000.00	
			xxx		

TOTAL ESTIMATED BUDGET: 210,000.00

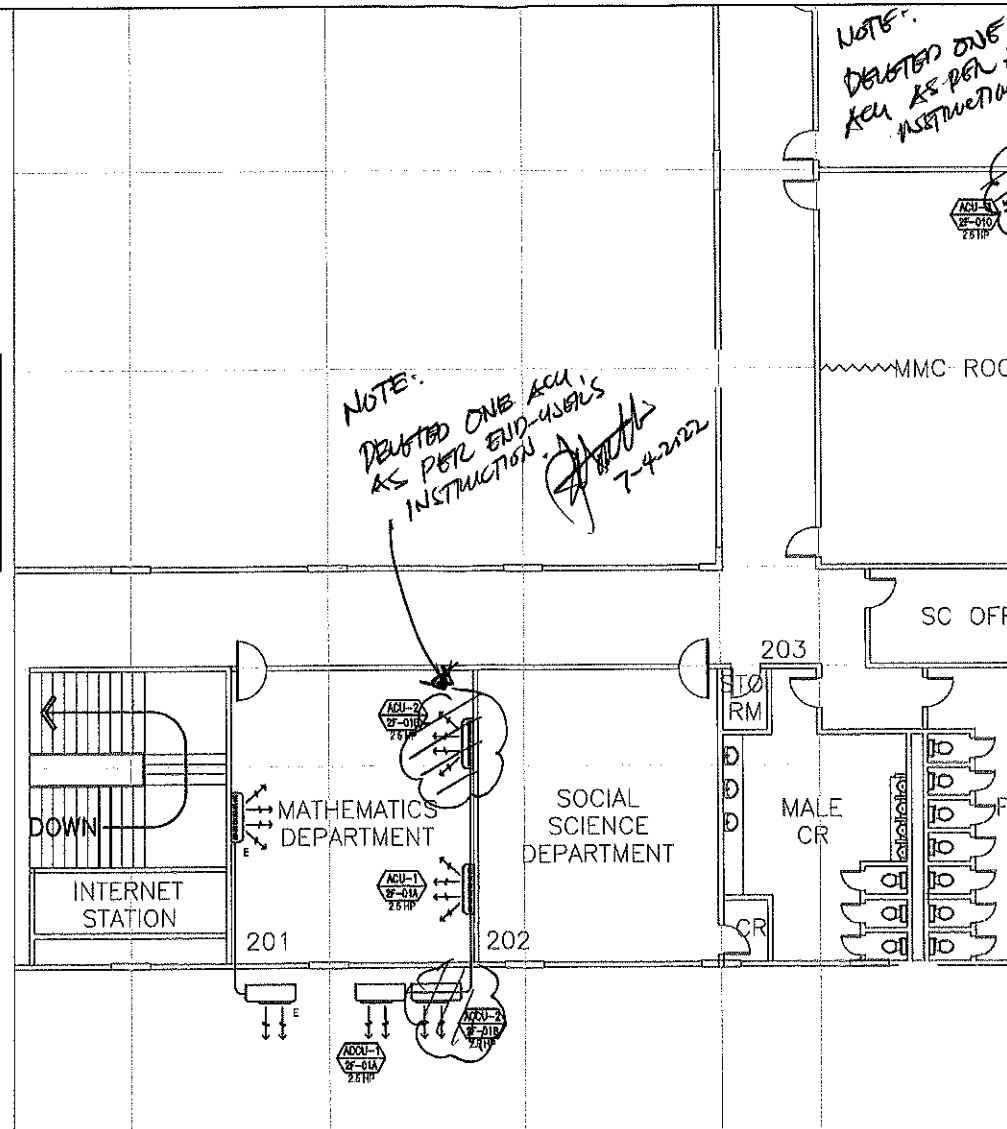
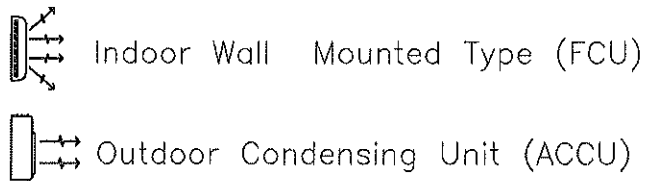
REMARKS/NOTE:

Disclaimer: Reproduction of this form is allowed subject to compliance to the Documented Information Procedure established by MMSU.

EQUIPMENT SCHEDULE:

ACU Equipment Schedule					Electrical Characteristics		
Designation	Description	Quantity	Location	Calculated Load, Btu/h	Rated Cooling Load, Btu/h	Power Consumption, Watts	V/hz/ph
ACU 1 ACU 2 ACU 3 ACU 4 ACU 5	Wall Mounted Type Split ACU, Inverter Type, R32	5	Mathematics Department & MMC Room	21,500	23,800	2,600	220-230/60/1

LEGENDS AND SYMBOLS:



CAS BUILDING MATHEMATICS DEPARTMENT AND MMC ROOM ACU

<p>FROM THE OFFICE: PHYSICAL PLANNING AND DEVELOPMENT OFFICE ROOM 202 FEM HALL, MARIANO MARCOS STATE UNIVERSITY City of Batac, 2908 Ilocos Norte Telefax: +63 (77) 792-3191</p>	<p>DRAWN BY: AMADEO M. AMUAD JR. MECHANICAL ENGINEER</p>	<p>PROJECT TITLE: PROVISION OF AIR CONDITIONING UNIT AT MATHEMATICS DEPARTMENT AND MMC ROOM</p>	<p>CONFORME: MARIVIC M. ALIMBUYUGEN DEAN, CAS</p>	<p>APPROVED BY: SHIRLEY O. AGRUPIS UNIVERSITY PRESIDENT</p>	<p>SHEET CONTENTS: ACU LAYOUT EQUIPMENT SCHEDULE LEGENDS AND SYMBOL</p>
	<p>CHECKED AND REVIEWED BY: AIDA V. CABANG ARCHITECT IV, CHIEF PHYSICAL PLANNING SECTION</p>	<p>RECOMMENDING APPROVAL: ROMEO B. BULDUJAO DIRECTOR, PPDO</p>	<p>REVISION AND DATE:</p>		
<p>PREPARED BY: AMADEO M. AMUAD JR. MECHANICAL ENGINEER</p>	<p>LOCATION: MMSU CAS, CITY OF BATAC, ILOCOS NORTE</p>				

ESTIMATED MATHEMATICS AND MMC ROOM COOLING LOAD CALCULATION

	Area (m2)	sq/ton	Q1	LPS	No of Pax	LPS	100%	LPS	Q (TR)	QT	QT(HP)
	Q of Room			Q of pax				Fresh Air			
MATH DEPT. & MMC											
MATHEMATICS DEPARTMENT	65.05	18	3.61	8	8	2.5	16	20	0.25	3.87	5.15 say 2.5hp x 2nos
MMC ROOM	104.58	18	5.81	15	15	2.5	30	37.5	0.47	6.28	8.38 say 2.5hp x 3nos

NOTE:

1. Select an inverter type or variable frequency drive ACU, 230v/ 1phase/ 60hz
2. LG Split type unit with a rated capacity of 2.5 HP (or approved equal brand)
3. Cost = 66,999.00 pesos
4. Conduct PMS (Preventive Maintenance Schedule) for existing unit wall mounted type
5. Coordinate the Electrical the power output for the new units (5 UNITS)

Prepared by

JR. Manuad
 JR. Manuad
 Mechanical Engineer
 MMSU PPDO

SITE/LOCATION OF INSTALLATION: CAS - MMC

REMARKS:

OK

NOT OK

PRE INSPECTION FOR ELECTRICAL SUPPLY:

RECOMMENDATION:

USE EXISTING

POWER SOURCE

LOCATION	TYPE OF DEVICES		VOLTAGE TYPE			WIRE SIZE		PROTECTIVE DEVICE		SIZE OF CONDUIT
			V	Φ		sq. mm		A		
	ACU OUTLET		230 V	3Φ		3.5 sq. mm		20 A		
	NEMA 1			1Φ	✓	5.5 sq. mm		30 A		
	NEMA 3R	✓	380 V	3Φ		8.0 sq. mm		40 A		

Prepared by:

NOTE:

"SITE/LOCATION" refers to College, Unit, Directorate, etc.

"LOCATION" refers to Rooms, Offices, Laboratories, etc.

PPGSD ELECTRICIAN

Checked by

FREDDIE M. BALANAY
Chief PPGSD Electrical Section

SITE/LOCATION OF INSTALLATION: CAS - Department of Mathematics

REMARKS:

OK

PRE INSPECTION FOR ELECTRICAL SUPPLY:

NOT OK

RECOMMENDATION:

by existing power supply
the supplier shall provide
additional wiring from
existing unit to CAS

LOCATION	TYPE OF DEVICES	VOLTAGE TYPE			WIRE SIZE		PROTECTIVE DEVICE		SIZE OF CONDUIT
	ACU OUTLET	230 V	3 ϕ		3.5 sq. mm		20 A		
	NEMA 1		1 ϕ		5.5 sq. mm		30 A		
	NEMA 3R	380 V	3 ϕ		8.0 sq. mm		40 A		

Prepared by:

NOTE:

"SITE/LOCATION" refers to College, Unit, Directorate, etc.

"LOCATION" refers to Rooms, Offices, Laboratories, etc.

PPGSD ELECTRICIAN

Checked by

FREDDIE MICHAEL BALMAY
 Chief PPGSD, Electrical Section